

BLOOMFIELD

ESTATE

\$1,003,900

Lot 101 – 2010m2 Titles Q3 2025

Caversham 307



SJDhomes



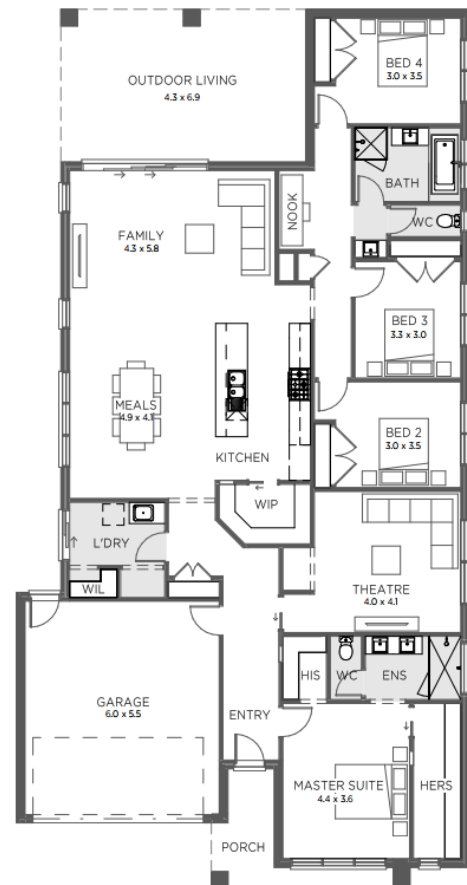
Land Size: 2010

Home Size: 30.7 Squares

PACKAGE INCLUSIONS:

- Façade as shown – others available
- 2590mm ceilings
- Double glazed sliding doors and awning windows
- 20mm stone benchtop to kitchen
- 900mm wide stainless steel appliances
- Flush tiled shower bases
- Extensive floor tiling/timber laminate options
- Quality carpet to bedrooms and theatre
- Energy efficient heat pump hot water system
- Upgraded insulation
- Developer requirements
- Option to customise to suit your needs

Contact me today to chat about homes to suit this block



Kevin Pearson 0413 778 543

BLOOMFIELDESTATE.COM.AU



Information contained herein is subject to change without notice. No responsibility is accepted by the vendor nor the agent for any action taken in reliance thereon. Prospective purchasers should make their own enquiries to satisfy themselves on all aspects. Details herein do not constitute any representation by the vendor or the agent and are expressly excluded from any contract. Images are artist's impression and for illustrative purposes only.