

# BLOOMFIELD

ESTATE

# \$1,057,300

Lot 105 – 2007m2 Titles Q3 2025

Caversham Grand 339



## SJDhomes



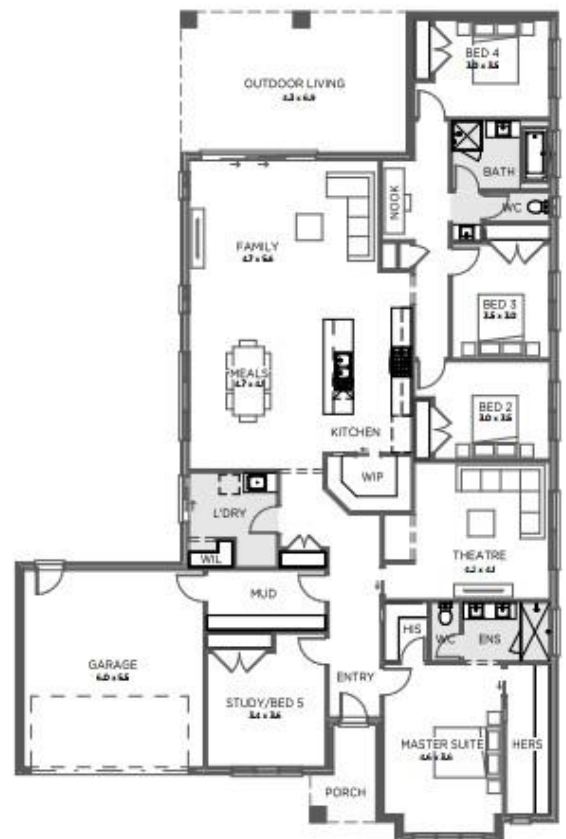
Land Size: 2007

Home Size: 3.2 Squares

### PACKAGE INCLUSIONS:

- Façade as shown – others available
- 2590mm ceilings
- Double glazed sliding doors and awning windows
- 20mm stone benchtop to kitchen
- 900mm wide stainless steel appliances
- Flush tiled shower bases
- Extensive floor tiling/timber laminate options
- Quality carpet to bedrooms and theatre
- Energy efficient heat pump hot water system
- Upgraded insulation
- Developer requirements
- Option to customise to suit your needs

Contact me today to chat about homes to suit this block



Mark Battersby 0452 619 581

[BLOOMFIELDESTATE.COM.AU](http://BLOOMFIELDESTATE.COM.AU)



Information contained herein is subject to change without notice. No responsibility is accepted by the vendor nor the agent for any action taken in reliance thereon. Prospective purchasers should make their own enquiries to satisfy themselves on all aspects. Details herein do not constitute any representation by the vendor or the agent and are expressly excluded from any contract. Images are artist's impression and for illustrative purposes only.