

# BLOOMFIELD

ESTATE

# From \$1,101,400\*

Lot 205, Bloomfield Estate, Ambience Way

Portland 301



4



2



2

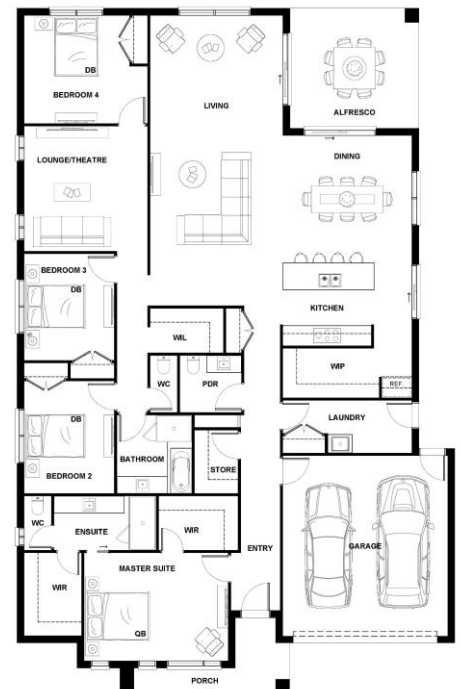
Land Size: 2000m

Home Size: 32.51sq

## PACKAGE INCLUSIONS:

- 'H' class waffle concrete slab
- Double glazing throughout
- 'Bristle' Classic range concrete low profile roof tiles
- Dimmable LED downlights throughout
- Flooring throughout (tiles and premium carpet)
- 'Quantum Zero' benchtops with 20mm edge profile, to
  - Kitchen
  - Fisher & Paykel 900mm wide Kitchen Appliances
  - Laminate overhead cupboards with concealed rangehood
  - to Kitchen
- 'Quantum Zero' benchtops with 20mm edge profile, to
  - Wet Areas
  - Flush finish tiled shower bases to Bathroom and Ensuite
- Gas ducted heating

**Beachwood**   
HOMES



Leanne Marshall 0409 449 841

[BLOOMFIELDESTATE.COM.AU](http://BLOOMFIELDESTATE.COM.AU)

ESSENTIA  
PROJECTS

Sales +  
Marketing

 LANDCORE

Information contained herein is subject to change without notice. No responsibility is accepted by the vendor nor the agent for any action taken in reliance thereon. Prospective purchasers should make their own enquiries to satisfy themselves on all aspects. Details herein do not constitute any representation by the vendor or the agent and are expressly excluded from any contract. Images are artist's impression and for illustrative purposes only.