

ROSELEIGH HOMES



House & Land Package

\$1,384,515

**Lot 208 Ambience Way, Nilma- LOT SIZE 2008m2
Bloomfield Estate**

Adah- 36.92sq Total Area

- 2.7m ceiling height throughout, with feature 4.20m high vaulted ceilings to Rumpus, Kitchen, Meals and Living areas
- Feature silvertop ash shiplap cladding and render finish to exterior facade
- Study and Mud room both with built in joinery
- Feature arch window to Rumpus Room
- Raked highlight window to living space letting in a wealth of natural light
- Seperate powder room
- Stacking sliding door to meals area
- Freestanding bath to bathroom
- Double glazed windows throughout
- 3.8kw of solar power



4



2



2

Contact Lisa- Lisa@roseleighbomes.com.au

0412 674 343

Built for you.

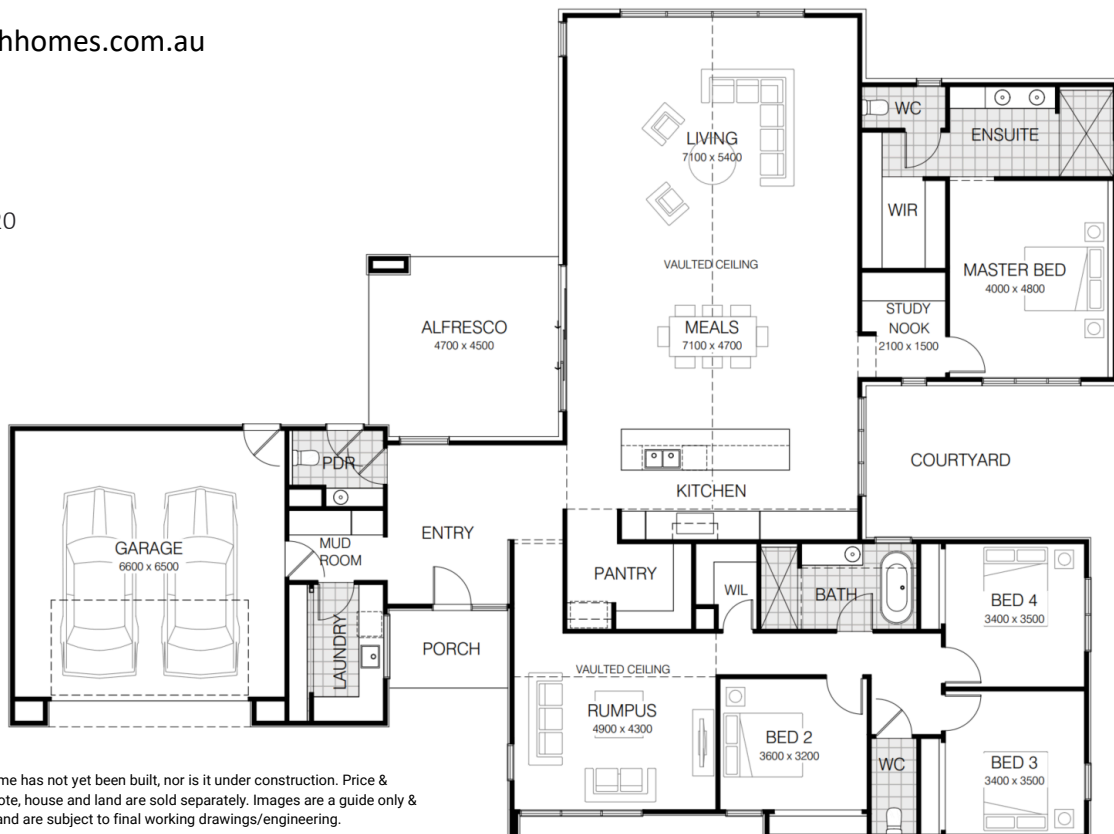
03 5622 6777

roseleighbomes.com.au

12 Hazel Drive, Warragul, VIC 3820

@roseleigh_homes

roseleighbomes



*Please note this is a house and land package and the home has not yet been built, nor is it under construction. Price & availability are subject to change without notice. Please note, house and land are sold separately. Images are a guide only & subject any developer approval. Site costs are estimates and are subject to final working drawings/engineering.

CDB-U 52517