

ROSELEIGH HOMES



House & Land Package

Lot 215 , Ambience Way

Nilma - 3429m2

Bloomfield Estate

Maddox - 32.26sq Total Area

- 2.7m ceiling height throughout, with feature 2.55m ceiling heights to Entry
- Feature Brickwork & Innova Cladding to facade with 35 degree Colorbond roofing
- Large Kitchen/Meals/Living Area with 4.0m vaulted ceiling and raked highlight window
- Caesarstone (M0 or M1 Range) to Kitchen
- Feature Gallery Entry with joinery
- ABI Tapware Throughout Home
- Quality floor coverings throughout entire home
- Double-glazed windows
- Full Ducted Heating and Refrigerated Ducted Cooling
- 3.8kw Solar System

Contact Lisa - Lisa@roseleighhomes.com.au

0412 674 343

Built for you.

03 5622 6777

roseleighhomes.com.au

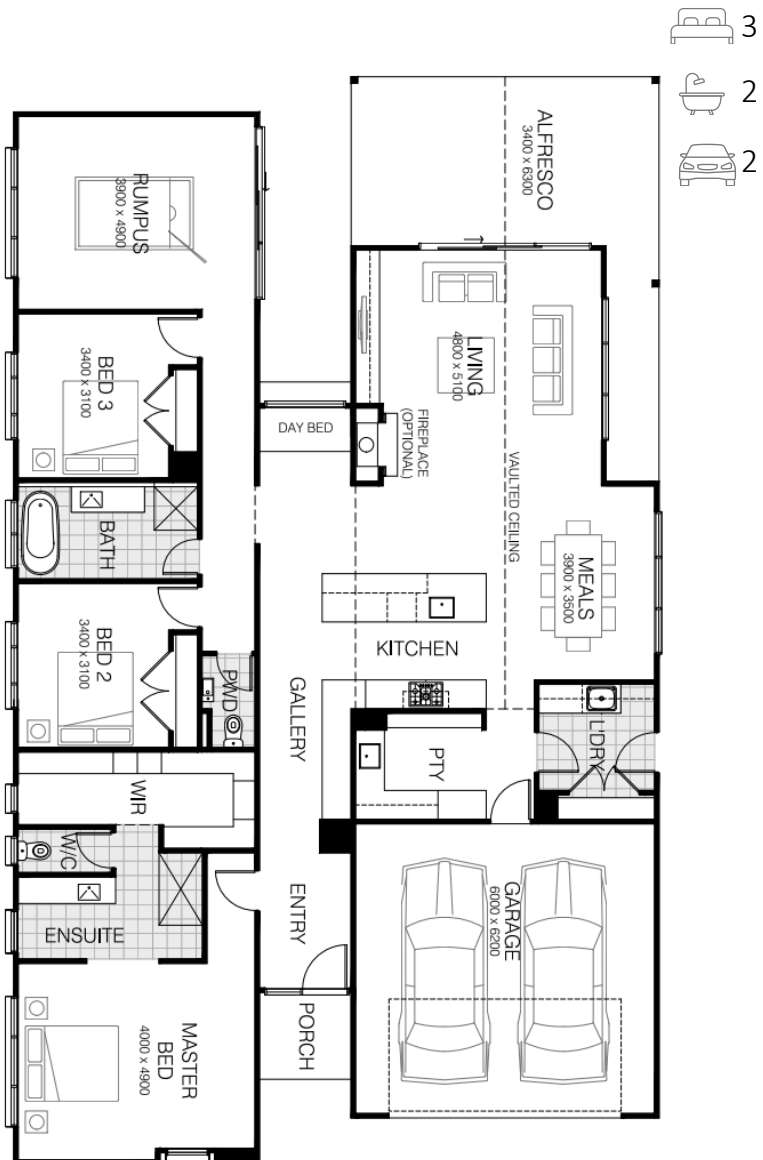
12 Hazel Drive, Warragul, VIC 3820

@roseleigh_homes

roseleighhomes

CDB-U 52517

\$1,297,800*



*Please note this is a house and land package and the home has not yet been built, nor is it under construction. Price & availability are subject to change without notice. Please note, house and land are sold separately. Images are a guide only & subject any developer approval. Site costs are estimates and are subject to final working drawings/engineering.