

ROSELEIGH HOMES



House & Land Package

Lot 217 Ambience Way, Nilma- LOT SIZE 2008m2
Bloomfield Estate

Ashton 282- 35.39sq Total Area

- 2.7m ceiling height throughout with 3300mm ceiling height to Entry, Lounge and Study,
- Bagged & painted brickwork to facade
- Seperate Study area with 4 generous size bedrooms and three living areas
- Generous Meals/Living Area
- Caesarstone (M0 or M1 Range) to Kitchen
- Freestanding bath to bathroom
- ABI tapware throughout home
- Quality floor coverings throughout entire home
- Double-glazed windows
- Full ducted heating and refrigerated ducted cooling
- 3.8kw Solar System

Contact Lisa - lisa@roseleighbomes.com.au
0412 674 343

Built for you.

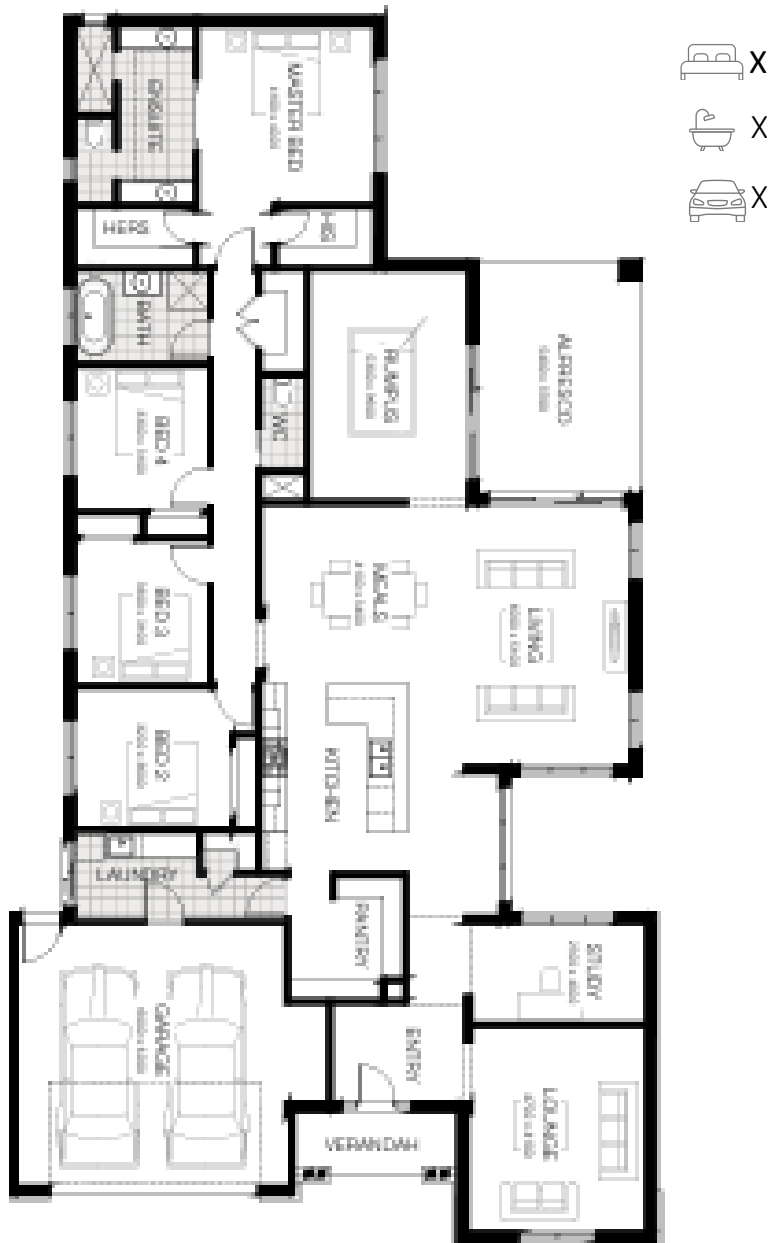
03 5622 6777
roseleighbomes.com.au
12 Hazel Drive, Warragul, VIC 3820

 @roseleigh_homes

 roseleighbomes

CDB-U 52517

\$1,298.00



*Please note this is a house and land package and the home has not yet been built, nor is it under construction. Price & availability are subject to change without notice. Please note, house and land are sold separately. Images are a guide only & subject any developer approval. Site costs are estimates and are subject to final working drawings/engineering.

ROSELEIGH

HOMES



House & Land Package

Lot 1703 Flightless Road, Nar Nar Goon - 565m2
Ridgelea Estate

Maddox - 29.58sq Total Area

- 2.7m ceiling height throughout, with feature 2.55m ceiling heights to Entry
- Feature Brickwork & Innova Cladding to facade with 35 degree Colorbond roofing
- Large Kitchen/Meals/Living Area with 4.0m vaulted ceiling and raked highlight window
- Caesarstone (M0 or M1 Range) to Kitchen
- Feature Gallery Entry with joinery
- Separate Study and Rumpus spaces
- ABI Tapware Throughout Home
- Quality floor coverings throughout entire home
- Double-glazed windows
- Exposed Aggregate Driveway, Porch & Alfresco
- Full Ducted Heating and Refrigerated Ducted Cooling
- 3.8kw Solar System

Contact Riley- Riley@roseleighbomes.com.au
0456 881 899

Built for you.

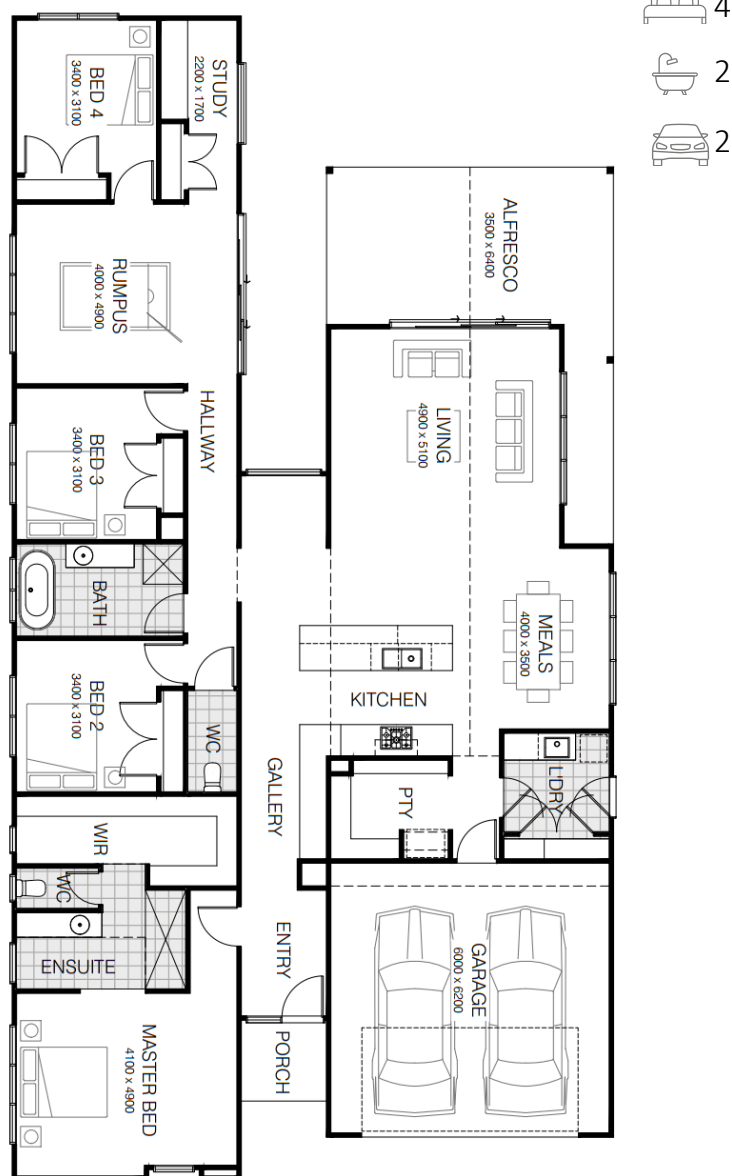
03 5622 6777
roseleighbomes.com.au
12 Hazel Drive, Warragul, VIC 3820

@roseleigh_homes

roseleighbomes

CDB-U 52517

\$1,113,000*



*Please note this is a house and land package and the home has not yet been built, nor is it under construction. Price & availability are subject to change without notice. Please note, house and land are sold separately. Images are a guide only & subject any developer approval. Site costs are estimates and are subject to final working drawings/engineering.